



[Home](#)
[About our Firm](#)
[Our Vision](#)
[Project Approach](#)
[Consulting](#)
[Portfolio](#)
[Contact Us](#)

Dental Suite of Dr. Jacobi

The allotted space between the building entrance corridor and its perimeter wall was inadequate for standard-size rooms on either side of a centered corridor through the space.

The design solution was to utilize less room depth by creating angular walls for the dental treatment rooms. Further space was obtained by overlapping the entrance to each dental treatment space from the adjacent rooms. Additional space was gained since the dental room recesses permitted the walkway to be less than standard width and still function.

This combined effort of angular placed walls, recessed entrances, and reduced corridor passage achieved enough allocated space to provide an office and reception area opposite the dental rooms.

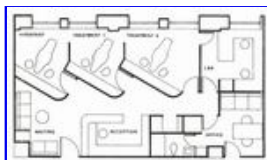
The angular walls also relieved the corridor length and provided a sculptured space for the interior waiting area.



Photo of reception area



Perspective of treatment rooms



Floor plan

 [Printable Format](#) (Adobe Reader required)

Copyright © David Zeunert & Associates. All Rights Reserved.