



[Home](#)
[About our Firm](#)
[Our Vision](#)
[Project Approach](#)
[Consulting](#)
[Portfolio](#)
[Contact Us](#)

Kantor Residence

The client purchased two adjacent one bedroom apartments in a high-rise building, seeking to create one quality unit. A standard apartment unit represents minimum square foot space allotments. This conversion required the deletion of an extra kitchen and, most challenging, the retrofit of the plumbing infrastructure without intrusion into other apartment units.

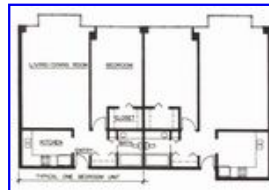
The solution of adding a step at the entrance vestibule accommodated the plumbing reconfiguration without disturbing the other units. A powder room for visitors was created from the second kitchen, with the remaining kitchen area added to the existing single kitchen.

The party wall between the two units was removed, providing a generous living area. Further spaciousness was achieved by replacing the solid bedroom wall with glass block in a curvilinear form that added geometric interest, thus eliminating the stilted rectangular shapes of a standard high-rise apartment unit.

These curvilinear forms and light transparency provided an artistically-sculptured apartment with minimum cost.



*Perspective showing
re-configured apartment*



*Floor plan of existing
conditions*

 [Printable Format](#) (Adobe Reader required)

Copyright © David Zeunert & Associates. All Rights Reserved.